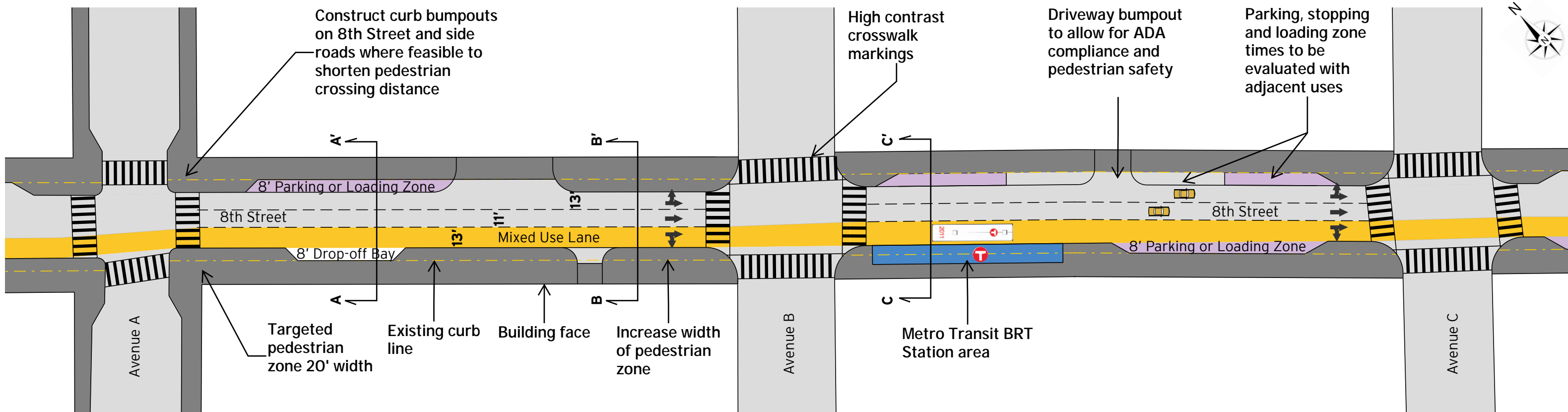


8th Street South: Concept Plan Illustration



Curbside Uses

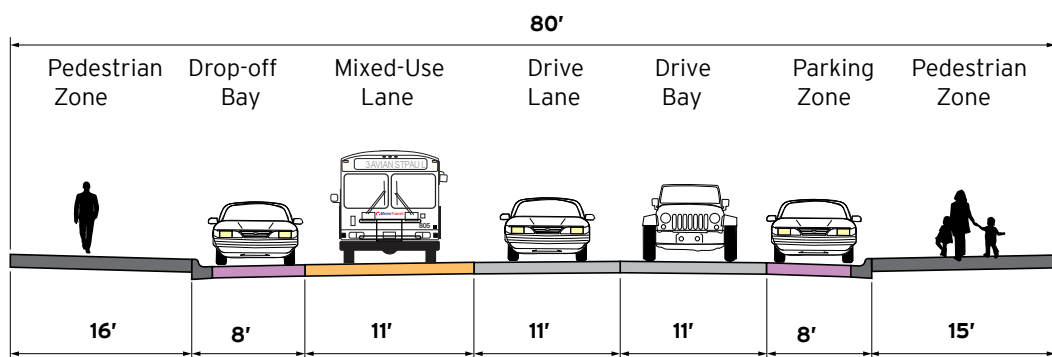
- Existing and proposed curbside use to be evaluated
- Parking locations and number of spaces to be determined
- Driveways and accesses to remain open
- Existing drop-off bays to be evaluated
- Areaway locations to be determined along with utility coordination
- Improve pedestrian and street lighting (LED)
- Determine landscape, trees and streetscape elements in furnishing zone
- ADA compliance, including ramps
- Match existing features to building face (fence, railings, planters, etc)

Traffic Uses

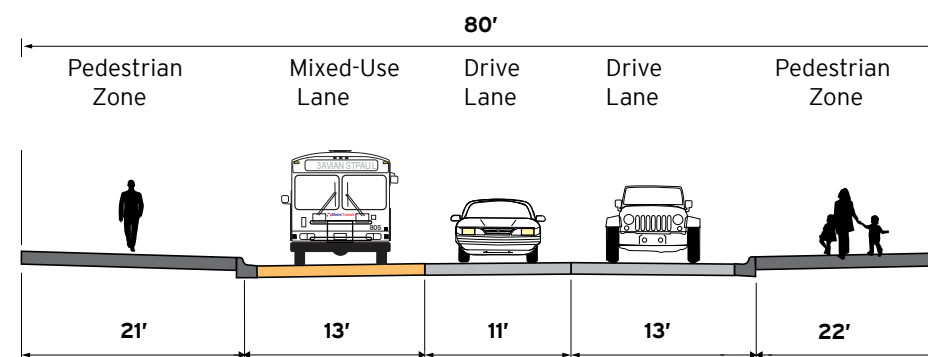
- Improve pavement and underground City utility work
- Improve signals and pedestrian indications at intersections
- General bus/vehicle travel lane. Peak period curb side use restrictions may vary by block
- Balance curbside uses with achieving wider sidewalks

8th Street South: Typical Sections

A - A'



B - B'



C - C'

